

Photos of the month

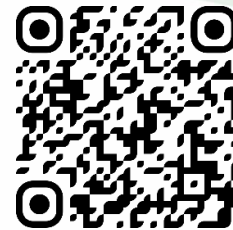


Attendees taking part in the activities at the Newsham archaeology event.

Welcome to the November 2022 edition of the Northumberland Line newsletter. The aim of this is to give an overview of upcoming site work, as well as letting you know about key project milestones.

This edition includes information on an archaeology event at Newsham, bridge and underpass works between New Hartley and South Newsham, key works happening at each station location, including four updated virtual tours, and upcoming road closures.

If you wish to receive future editions of this newsletter straight into your email inbox, sign up at nland.cc/signup or use the QR code below.



Alternatively, if you would prefer to have a paper copy delivered to your doorstep, please let us know by calling **0345 600 6400** or email rail@northumberland.gov.uk.



Underpass works being completed between Seaton Delaval and Newsham.

What is the Northumberland Line?



The Northumberland Line will bring passenger trains back into service between Ashington and Newcastle. It will provide six new stations at Ashington, Blyth Bebside, Bedlington, Newsham, Seaton Delaval and Northumberland Park, with journeys between Newcastle and Ashington taking about 35 minutes with no need to change trains. Trains will run around half-hourly. Alternatively, you can switch from the Northumberland Line at Northumberland Park to Tyne and Wear Metro for onward journeys to the Airport, Tynemouth and South Shields.

The freight trains that currently use the railway will still be able to do so, helping support the economic aspirations of both Lynemouth Power Station and the Port of Blyth.



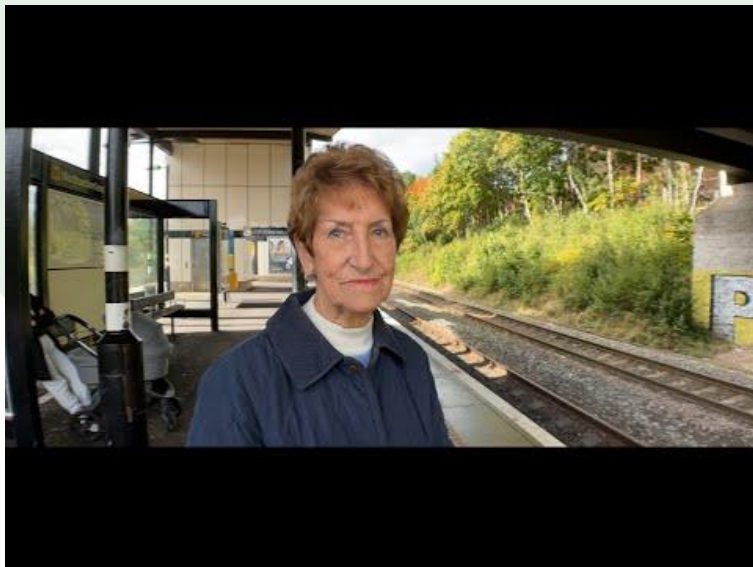
Progress update and look ahead

£10 million investment confirmed to kickstart the transformation of Northumberland Line

Leaders at the North of Tyne Combined Authority (NTCA) have given their backing for a £10 million package of investment along the Northumberland Line. The funding is part of a £130 million investment programme that will lead to the transformation of towns linked by the Northumberland Line and support the establishment of an economic corridor along the route.

The initial £10 million will be used to deliver a ten-point plan, which includes improving transport links to and from the railway stations and backing regeneration projects in Ashington and Blyth.

In the following video, the North of Tyne Deputy Mayor and Cabinet Member for Housing, Land and Development Norma Redfearn CBE, explains the importance of the funding to the community.



Mayor Norma Redfearn explaining how investment around the Northumberland Line will benefit communities:

<https://www.youtube.com/watch?v=A-hK0jf4puc>

Ashington event at Wansbeck Square

On Tuesday 13 December between 3pm - 6:30pm join us at NCC Council office, Wansbeck Square, Ashington to find out more about the progress of works at your new Ashington Station, plans and artist's impressions. See details of the work completed so far including a 360 virtual tour of the construction site. Find out about upcoming works and how this might affect you, including planned road closures as well as the latest news on Hospital Level Crossing. Meet members of the team working on the project including Northumberland County Council, Morgan Sindall Infrastructure, Network Rail and Northern Trains Limited.

Virtual tour

Every month our stations contractor, Morgan Sindall, will be providing a 'behind the fence' look at each of their active sites. By using the QR codes below, you will be able to walk through the station sites and see the progress that has been made, as well as learning how some of the work has been delivered and details of the machinery involved. All images provided were taken by fully competent and trained individuals, working to and fully compliant with the safety guidance for each location.

Take our tours below.

[Ashington](#) [2022.11.16](#)



[Bedlington](#) [2022.11.16](#)



[Newsham](#) [2022.11.16](#)



[Seaton Delaval](#) [2022.11.16](#)



Newsham archaeology event

Around 130 children and their adults came together at Newsham Primary School to enjoy a fun family day on Monday 24 October. The session provided the opportunity for young people and adults to join Wessex Archaeology and Morgan Sindall to find out more about the archaeological discoveries along the Northumberland Line and beyond.

Activities included grinding their own flour, taking a virtual reality walk through an iron age village and building a scale-model bridge. These activities were followed by a presentation on the site excavations, including what is believed to be an Iron Age settlement found near the site of the proposed Newsham train station.



Photo of the bridge building activity and the presentation by Wessex Archaeology.

"It was great to see children getting involved in the interactive activities and learning about the history of where they live. I'd like to extend a big thank you to Wessex Archaeology and Morgan Sindall and their staff for organising the activities and presentation."

– Councillor Humphrey, ward member for Newsham

"I hope the archaeological work we have undertaken as part of the Northumberland Line project has given people in the communities local to the railway a stronger tie to their heritage and history. You never know what is under your feet!"

– Emily Eastwood, Wessex Archaeology Project Manager

Bridge and underpass works

Between September and November, contractors have been working to repair and upgrade a bridge on the existing railway line in order to prepare it for the arrival of the Northumberland Line passenger service.

The bridge, known as "Underbridge 42", is located between New Hartley and South Newsham, and carries the railway over a footpath/farm access road. The works have included reinforcing the bridge arch so that it can carry more trains along the line, and removing the track to expose the top of the bridge.

The repairs have also seen the replacement and repointing of stonework throughout the bridge and underpass. The upgrades have now been successfully completed, the tracks replaced and the contractors are now working to finalise the works area.



The top of arch after the tracks were removed.



View of Underbridge 42 from the footpath, with the arch reinforcement in place.

Northumberland Park

Surveys and ground investigation works started at the site of the new Northumberland Park station this month. These works will help us better understand the make-up of the ground, which will in turn assist in finalising the construction methodology for the station.

The site of the new Northumberland Park Station includes former mining works, and investigations are needed to confirm if the former workings require grouting (filling).

Seaton Delaval

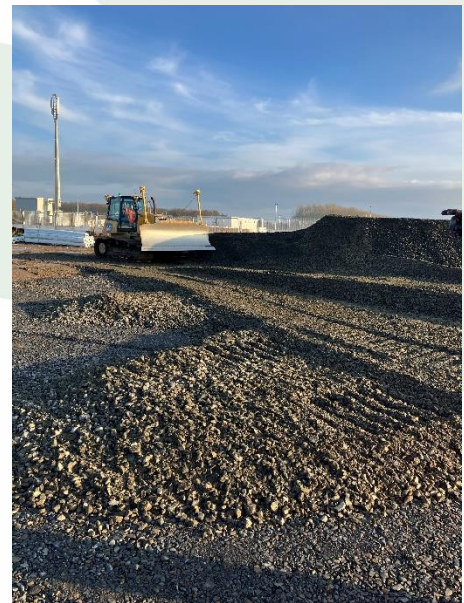
The grouting of the former mining works has continued throughout November at the site of Seaton Delaval station and is expected to be completed by early December. The grouting work is necessary to fill in former mine workings and to make the ground stable.



View of the mining and grouting works being undertaken at the site of Seaton Delaval station.

Newsham

Works to prepare the site for the construction of Newsham station are nearly complete. The next stage of works will see piles being inserted into the ground, which will support the foundations of the new station building. This work is due to start in December 2022 and will continue until the site closes for Christmas (22 December). The works will re-start in early January.



View of the site preparation works at Newsham station.

In late December, contractors will begin track renewal and level crossing works between New Hartley and South Newsham. The works will be completed overnight to keep disruption on the railway to a minimum.

They will run from 10pm to 5:30am the following day, starting from Monday 12 December until Friday 23 December. The works will be on weekdays only.

Blyth Bebside

Preliminary work at Blyth Bebside station has included clearing the land of vegetation ahead of the construction. Work to construct the station is due to start in 2023, and more details will be shared in due course.

Ashington

November saw the demolition of the old station platform and walls, and works are now underway to build the new station. The first sections of the new station building have been delivered to site and are being installed.



Vehicle delivering "pre-cast units" (prepared off site) to Ashington station for use in the new station.



View of the "pre-cast units" after installation at Ashington station.

Now works will begin to upgrade the tracks running into the station. These will need to be undertaken overnight and the team will aim to keep any noise and local disruption to a minimum.

The works will take place from 10pm to 5:30am the following day, starting on Monday 28 November and running until Thursday 1 December, and then from Monday 5 December until Thursday 8 December. The works will be on weekdays only.

Bedlington

The next phase of activity at Bedlington is exploratory works relating to the historic mining works in the area, to confirm the need for grouting (filling).

Works to construct the station will commence in early 2023, and more details will be shared in due course.

"The former Boots building at Bedlington was successfully demolished over a couple of weekends in October. This was successful in terms of safety and programme, but also in terms of the low impact on our neighbours, given the works were undertaken in a constrained area beside a care home.

Looking ahead, level crossing works are due to ramp up. Delivering these works whilst minimising the impact to the local communities is key to their success. There's been a lot of planning to date, and no doubt there is a lot more to come to help us achieve this.

On a personal note, it was my one-year anniversary on the programme recently. What a year it's been!" – Neil Blagburn, Northumberland Line Programme Director

Upcoming road closures

Upcoming road closures

We understand how disruptive any road closures (either partial or full) can be for journeys. Unfortunately, they are needed on this project, to allow the team to complete all the necessary works safely.

Where possible, we share information about road closures in advance to allow people to plan their journey. These will be shared via Northumberland County Council's social media channels, primarily on Twitter **@N_landCouncil**.

The following is a list of the road closures currently planned. Please note, these may be subject to change.

St Michael's Avenue, New Hartley (Hartley Level Crossing)

Full road closures will take place on the following dates.

- 8pm on Wednesday 30 November to 5:40am on Thursday 1 December.
- 12pm on Friday 2 December to 5:40am on Monday 5 December.
- 9pm on Thursday 8 December to 5am on Friday 9 December.

Mares Close Level Crossing

Footway closure between the hours of 7am and 5pm will take place every day between:

- Monday 5 December and Friday 9 December.

Astley Road Access Point

Half road closures between the hours of 9pm and 5am will take place on the following dates.

- Thursday 1 December.
- Monday 5 December to Thursday 8 December.

Seghill Level Crossing

Road and footway closures between the hours of 8pm and 6am everyday between:

- Monday 12 December and Friday 16 December.

Plessey Road Level Crossing

Road and footway closures between the hours of 8pm and 6am everyday between Monday 19 December and Friday 23 December.

Bebside Level Crossing

Road and footway closures between the hours of 8pm and 6am everyday between Monday 9 January and Friday 13 January.

Bedlington South Level Crossing

Road and footway closures between the hours of 8pm and 6am everyday between Monday 16 January and Friday 20 January.

West Sleekburn Level Crossing

Road and footway closures between the hours of 8pm and 6am everyday between Monday 23 January and Friday 27 January.

Hollywell Level Crossing

Full road closure between the hours of 10pm and 5am everyday between:

- Monday 23 January and Thursday 26 January;
- Monday 30 January and Thursday 2 February; and
- Monday 6 February and Thursday 9 February.

Bedlington North Footpath Level Crossing

Footway closures between the hours of 7am and 5pm everyday between Monday 30 January and Thursday 3 February.

Connect with us



Connect with us and keep updated online by signing up at nland.cc/signup. Alternatively, scan the QR code below to sign-up to receive the digital newsletter **monthly**.

Up to date information about the project will be included on the scheme website www.northumberland.gov.uk/line.

If you would like to get in touch with us to ask any questions, please use the details below and we will try to ensure the appropriate person responds to you as soon as possible.



Keeping You Connected

Northumberland Line... Connecting Communities, Businesses and People

