

Northumberland Line

Keeping You Connected

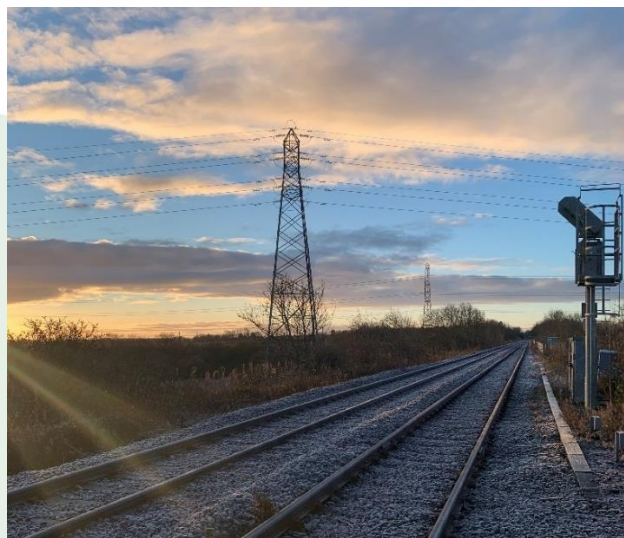
[Edition 5 | January 2023]



Photos of the month



Marie Addison (MBE) Regional Community and Sustainability Manager for Northern Trains on the Santa Special Service

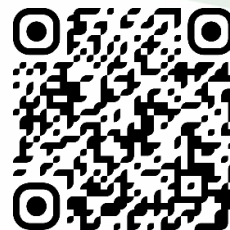


A sunrise whilst on track at Bomarsund Crossing

Welcome to the January 2023 edition of the Northumberland Line newsletter. The aim of this is to give you an overview of upcoming site work, as well as letting you know about key project milestones.

This edition includes information on the recent Santa Special Service attended by local children, the hoardings at Ashington, December charity work, details of public information sessions, links to latest virtual tours and an update of works by station location.

If you wish to receive future editions of this newsletter straight into your email inbox, sign up at **nland.cc/signup** or use the QR code below.



Alternatively, if you would prefer to have a paper copy delivered to your doorstep, please let us know by calling **0345 600 6400** or email **rail@northumberland.gov.uk**.



Keeping You Connected

What is the Northumberland Line?



The Northumberland Line will bring passenger trains back into service between Ashington and Newcastle. It will provide new stations between Ashington and Newcastle Central Station taking 35 minutes with no need to change trains. Trains will run around half-hourly. Alternatively, you can switch from the Northumberland Line at Northumberland Park to Tyne and Wear Metro for onward journeys to the Airport, Tynemouth and South Shields.

The freight trains that currently use the railway will still be able to do so, helping support the economic aspirations of both Lynemouth Power Station and the Port of Blyth.



Progress update and look ahead

Art work at Ashington

Pupils from Dales School and Northumberland County Council Leader Glen Sanderson, deputy leader Richard Wearmouth and Ashington Councillor Caroline Ball visited the new hoardings around Ashington Station's construction site on 14 December. The artwork features pupils from a nearby school holding up images of the line when it was last in use for passengers in the 1960s. The heritage images are from personal collections of former railway enthusiasts Malcolm Dunnett and Ken Groundwater.



Pupils from The Dales School in front of the new hoardings at Ashington Station.

"It is fantastic to see these hoardings starting to go up and it is only fitting they're at what will be the gateway station for the project. Bringing the community with us on this hugely ambitious project is key and we're working with a number of schools and groups along the line to involve them."

– **Council Leader Glen Sanderson**

"Everyone at The Dales School is delighted to be involved in the Northumberland Line Arts Strategy. Projects like this bring the community together, which is so important."

Working together we will celebrate the new Northumberland line. The children had such a great time working and looking at the old photos showing them how Northumberland has changed over the years."

– **Dales School Headteacher, Dr Sue Fisher**

Santa Special Service

In December 2022, children from nearby schools and the families of Northern staff were treated to a special trip along the Northumberland Line. Passengers on the Santa Special Service, run by Northern, enjoyed a Christmas adventure – complete with carol singers, mince pies, and a very festive train decorated with tinsel. Santa Claus himself delivered presents to children along with one of his elves and even the Grinch made an appearance!



Local children on the Santa Special Service with Santa

"We wanted to spread some much-needed joy this Christmas with our Santa Express and let residents – and Father Christmas – get a glimpse of the new Northumberland Line. Northern will operate all passenger services and is already developing plans to provide a timetable that will help local communities and deliver this positive impact for the region. It was wonderful for the children to see the route they will be able to travel on and enjoy in the near future."

– **Northern Regional Director, Kerry Peters.**

Progress update and look ahead

Christmas charity work

In December, stations contractor Morgan Sindall and other project partners joined forces to raise a phenomenal £1,469 for three local charities (Community Food and Friendship, Newcastle Dog and Cat Shelter and Pathways 4 All) chosen by Morgan Sindall employees.

Morgan Sindall employees also donated to Wansbeck Valley Food Bank and VODA's Warm Space Chocolate Bar initiative across December.



Morgan Sindall employees donating to Wansbeck Valley Food Bank

Station construction information session

The Northumberland Line project team are providing public information session on Tuesday 14 February to share information about upcoming construction works Ashington station. The session will be held at the Northumberland County Council offices in Wansbeck Square, Ashington between 3pm - 6:30pm. The aim of the session is to provide the latest information about the project and upcoming works, and allow people to meet the team who are delivering the project in person and who can answer any questions you may have.

Newsham station car park update

An application was submitted to Northumberland County Council in December to allow for a phased delivery of car parking spaces at Newsham station. This follows on from securing planning permission to build the station in March 2022 and proposals for similar phasing at Seaton Delaval station.

This change reflects a recent review of the construction programme delivery and will see the car park constructed in two phases, in line with the demand forecasting for the site. The first phase will include the eastern car park and a limited number of spaces to the west (electric vehicle charging bays, Blue Badge bays and a drop-off area).

Cycle link to Bedlington Station

The council has scooped almost £15m funding towards new cycling and walking routes for Bedlington and Tynedale - to make it easier, safer and greener for people to get around the county.

The local authority secured over £14.7m through the Government's Levelling Up Fund (LUF) - a multi-billion pound scheme for eligible local authorities to invest in infrastructure that improves everyday life, including regenerating town centres, high streets and upgrading local transport.

In Bedlington, the scheme will provide new and upgraded active travel infrastructure to improve the east to west link across the town, connecting key residential and employment areas with the planned Northumberland Line station.

Additional benefits to this route include connections to schools across the town.

Works by station location

Palmersville Dairy

Works to construct a new underpass at Palmersville Dairy Level Crossing have recently commenced. Initially a new temporary access road off Whitley Road (A191) into the existing farmer's field will be constructed.

In order to facilitate these works, there will be a temporary traffic management arrangement in place, in the form of temporary traffic lights and a narrow lane system. This will be in place on Whitley Road (A191) until early April 2023.

Northumberland Park

Ground investigations are continuing, in order to confirm the make-up of the ground, which will in turn assist in finalising the construction methodology for the station, including whether any mining remediation is needed.

Following the completion of the ground investigation works, vegetation will be removed and a boundary fence will be installed. This work is currently expected to start in mid-February.



View of ground investigation works at Northumberland Park station site

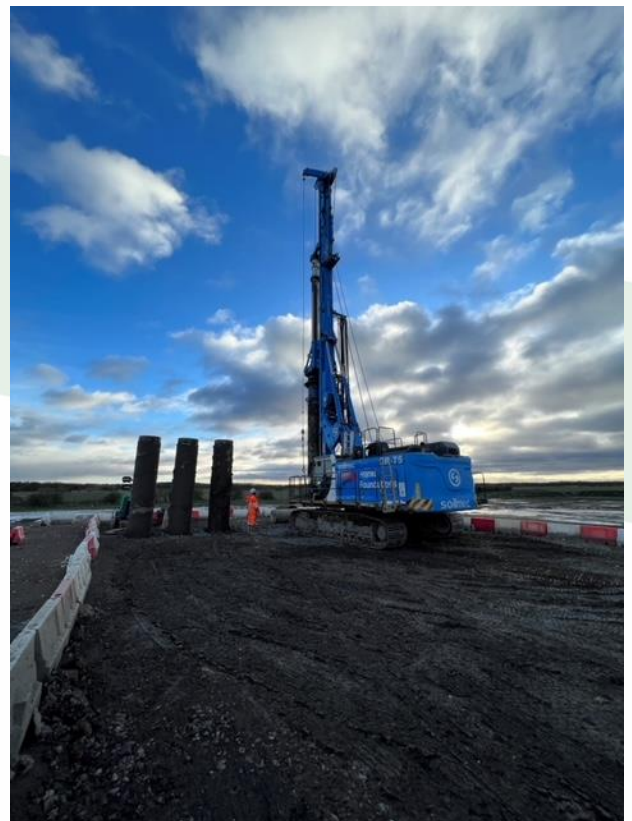
Seaton Delaval

Works to fill in areas of former mining have now been completed at Seaton Delaval, and works at the future station site are now paused until the Spring.

To the south of Seaton Delaval, between Backworth and Seghill, track renewal and level crossing works are underway. In order to minimise disruption to the freight services that use the railway line, the works must be undertaken at night time on weekdays and weekends. The works are expected to be completed by March 2023.

Newsham

Works have begun to prepare the ground for the foundations of the new station. This work will involve a method called 'piling', which is used to create deep foundations to support the new station structures above.



Piling rigs in action at Newsham station site

Works by station location

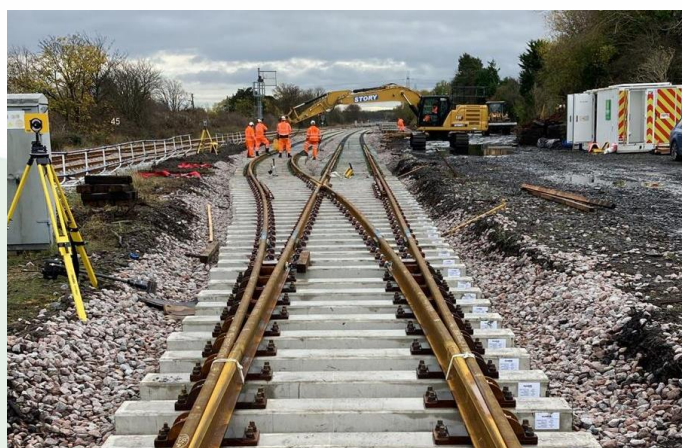
Blyth Bebside

Preliminary work at Blyth Bebside station has included clearing the land of vegetation ahead of the construction. Work to construct the station is due to start in 2023, and more details will be shared in due course.

Bedlington

Exploratory works relating to the historic mining works are currently being undertaken to confirm the need for grouting (filling).

Works to construct the station will commence in the next few months, and more details will be shared in due course. Outside of the station site, track renewal and level crossing works are ongoing.



Trackworks taking place at Bedlington

Ashington

Following the Christmas break, works on the new station platform have started again and will continue through 2023. January has also seen the upgrade of the access to Wansbeck Street car park from Kenilworth Road. The works required the temporary closure of a section of Kenilworth Road; however, this has now been completed. We would like to thank you all for your patience during this period of disruption.

Virtual tours

Every month our stations contractor Morgan Sindall will be providing a 'behind the fence' look at each of their active sites. By using the QR codes below, you will be able to walk through the station sites and see the progress that has been made, as well as learning how some of the work has been delivered and details of the machinery involved. All images provided were taken by fully competent and trained individuals, working to and fully compliant with the safety guidance for each location.

Take our tours below.

[Ashington](#)
[2023.01.18](#)



[Bedlington](#)
[2022.11.16](#)



[Newsham](#)
[2023.01.18](#)



[Northumberland](#)
[Park 2023.01.18](#)



Upcoming road closures

Upcoming road closures

We understand how disruptive any road closures (either partial or full) can be for journeys. Unfortunately, they are needed on this project, to allow the team to complete all the necessary works safely.

Where possible, we share information about road closures in advance to allow people to plan their journey. These will be shared via Northumberland County Council's social media channels, primarily on Twitter **@N_landCouncil**.

The following is a list of the road closures currently planned. Please note, these may be subject to change.

Hollywell Level Crossing

There will be a full overnight road closure at Hollywell Level Crossing between the hours of **10pm** and **5am** everyday between:

- **Monday 30 January to Friday 3 February;** and
- **Monday 6 February to Friday 10 February.**

Access across the Hollywell level crossing will be available during the daytime.

Bedlington North Footpath Level Crossing

Access across the Level Crossing via the footpath will be restricted between the hours of **7am and 5pm** everyday between **Monday 30 January and Friday 3 February**.

Seghill Level Crossing

The road and footway will be fully closed overnight between the hours of **10pm and 5am** everyday between:

- **Monday 6 February to Friday 10 February;** and

- **Monday 13 February to Friday 17 February.**

A replacement bus shuttle service will be available during closures. Access across the level crossing will be available during the daytime.

Coatsworth Farm Level Crossing

The road and footway will be fully closed overnight between the hours of **8pm and 6am** everyday between **Monday 6 February to Saturday 11 February**.

Bedlington North Level Crossing

The road and footway will be fully closed on the following weekends.

- **Saturday 11 February at 8pm to Monday 13 February at 6am.**
- **Saturday 18 February at 8pm to Monday 20 February at 6am.**
- **Saturday 25 February at 8pm to Monday 27 February at 6am.**

The road and footway will also be fully closed overnight between the hours of **8pm and 6am** between **Monday 13 February to Saturday 18 February**.

Marcheys House Level Crossing

The road and footway will be fully closed overnight between the hours of **8pm and 6am** everyday between **Sunday 19 February to Saturday 25 February**.

Bomarsund Level Crossing Footway

Access across the Level Crossing via the footway will be restricted between the hours of **7am and 5pm** every day between **Monday 27 February and Friday 3 March**.

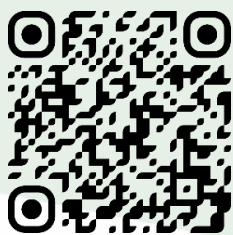
Connect with us



Connect with us and keep updated online by signing up at **nland.cc/signup**. Alternatively, scan the QR code below to sign-up to receive the digital newsletter **monthly**.

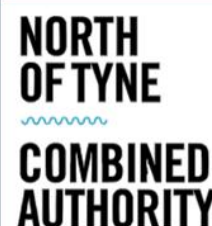
Up to date information about the project will be included on the scheme website **<http://www.northumberlandline.uk/>**.

If you would like to get in touch with us to ask any questions, please use the details below and we will try to ensure the appropriate person responds to you as soon as possible.



Keeping You Connected

Northumberland Line... Connecting Communities, Businesses and People



HM Government



NORTHERN